



GOOD MORNING  
Have Good Trading Day

FRIDAY



Price is what you pay.  
Value is what you get.

- Warren Buffet

## MARKET PULSE

### INDIAN INDICES

NAME	CMP	NET CH.	%
SENSEX	26304	-248	-0.94
NIFTY	7955	-84	-1.05

### INDIAN ADR'S

SYMBOL	CLOSE	GAIN/ LOSS %
DRREDDY	65.25	-1.61
HDFCBANK	60.20	-1.17
ICICIBK	8.25	-2.83
INFY	18.09	-0.33
TATAMOTOR	30.13	-0.76
WIPRO	12.15	-0.98

### FII AND MF ACTIVITY

SYMBOL	In Crs.
FIIs Eq (Provisional)	-991.87
FIIs Index Future	-858.367
FIIs Index Options	-2181.89
FIIs Stock Future	-1072.47
FIIs Stock Options	-34.657
DII's Eq (Provisional)	636.15

### CURRENCY

RBI RATE	05-NOV-2015
RUPEE - \$	65.6755
EURO	71.3499
YEN 100	54.0500
GBP	101.0221

## MARKET PULSE

### GLOBAL INDICES

NAME	CMP	NET CH.	%
DOW	17863	-4	-0.02
NASDAQ	5127	-14	-0.29
NIKKEI	19206	+89	+0.47
HANG SENG	22842	-209	-0.91
SGX NIFTY	7990	+18	+0.23

### WORLD COMMODITIES

FUTURE	U\$\$	CHANGES
CRUDE	45.35	+0.15
NATURAL GAS	2.373	+0.009
GOLD	1107.4	+3.2
SILVER	15.005	+0.022
COPPER	2.2635	+0.0085

### WORLD EVENTS

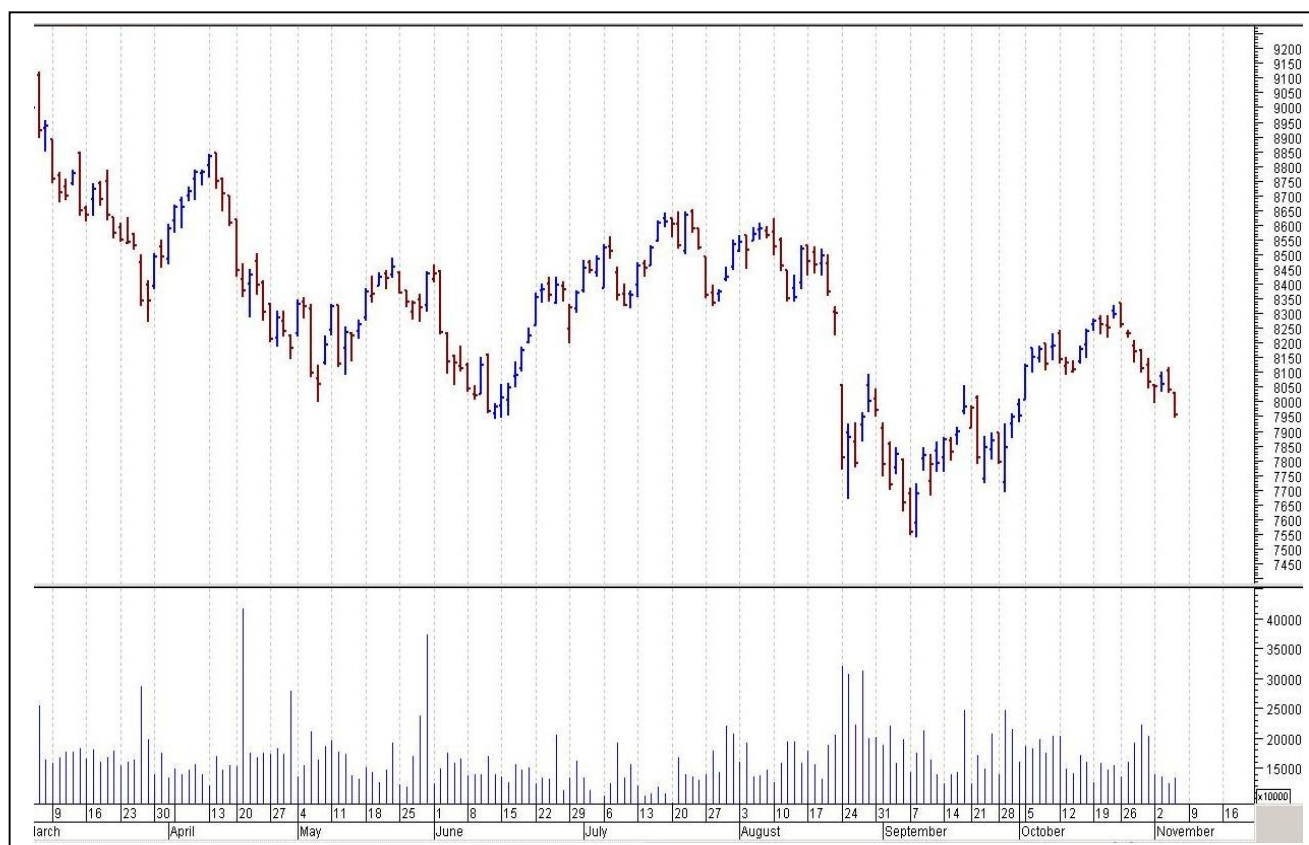
- US: Average Hourly Earnings m/m
- Non-Farm Employment Change
- Unemployment Rate
- UK: Manufacturing Production m/m

## TOP STORY

- Tata Steel Q2 Cons Net Profit At `1,528.7 Cr Vs `1,254.3 Cr (YoY). Cons Total Income At `29,304.7 Cr Vs `35,777 (YoY)
- Cipla Q2 Cons Net Profit At `431 Cr Vs `298.7 Cr (YoY). Cons Total Income At `3,452.4 Cr Vs `2,767.3 Cr (YoY)
- Majesco & Blueprint Announce Strategic Partnership
- Govt Says States To Take Over 75% Of Discom Debt As On September 30, 2015 Over Two Years. 50% Of Discom Debt Shall Be Taken Over In 2015-16 & 25% In 2016-17
- Polaris & Virtusa Enter Into A Definitive Share Purchase Agreement For 53% Stake Sale. Virtusa To Acquire 53% Of Paid Up Share Capital Of Co
- Rel Infra & L&T Submit Bids For BKC Smart City Project
- Gujarat Gas Q2 Net Profit At `22.8 Cr Vs `52 Cr (QoQ). Total Income At `1,572.2 Cr Vs `1,670.9 Cr (QoQ)



## NIFTY CHART



## MARKET COMMENTARY

Thursday turned out to be a disappointing session for the Indian equity indices which got pounded by around a percentage point, as investors remained concerned ahead of the exit poll results after the completion of the final phase of the elections in Bihar. The fifth and final round of voting for 57 seats across nine districts in the Bihar Assembly poll takes place. After a negative opening, the domestic bourses never looked in recovery mood and ended the trade at one month closing lows, breaching their crucial support levels of 26,250 (Sensex) and 8,000 (Nifty). Selling was both brutal and wide-based as none of sectoral indices on BSE could manage a green close. Counters which featured in the list of worst performers included realty, healthcare and banking. For today's trade Nifty likely to trade in the range between 8020 – 8040 in the upper side and 7970- 7950 in the lower side.

### MARKET LEVELS

	CMP	SUPPORT LEVELS				RESISTANCE LEVELS			
NIFTY	7995	7970	7950	7910	7850	8020	8040	8060	8090
USDINR	65.99	65.9	65.85	65.8	65.7	66.1	66.15	66.25	66.3





### FUTURES CORNER

SCRIPS	CLOSE	SUPPORT	TARGET		REMARKS
		STOP LOSS	T1	T2	
JSWSTEEL (SELL)	873.45	878	864	858	TRADING CALL
RELIANCE (SELL)	942.1	848	928	918	TRADING CALL
SKSMICRO (SELL)	430.85	434.8	424	418	TRADING CALL

### EQUITY CORNER

SCRIPS	CLOSE	SUPPORT	TARGET		REMARKS
		STOP LOSS	T1	T2	
NO CALLS					

### DELIVERY BASED CALL / INVESTMENT CALL

SCRIPS	CMP	SUPPORT	TARGET		REMARK
		STOP LOSS	T1	T2	

### BULK DEALS (BSE)

SCRIP	CLIENT NAME	BUY/SELL	QUANTITY	PRICE
FAGBEARING	ACACIA INSTITUTION PARTNERS LP	S	312,000	3,725
FAGBEARING	ICICI PRUDENTIAL M F - ICICI PRUDENTIAL INFRASTRUCTURE FUND	B	104,144	3,725
FAGBEARING	INDIA MIDCAP FUND (MAURITIUS) LIMITED	B	190,000	3,725

### BULK DEALS (NSE)

SCRIP	CLIENT NAME	BUY/SELL	QUANTITY	PRICE
ARVINFRA	EQUITY INTELLIGENCE INDIA PRIVATE LIMITED	BUY	130000	62.99
MCX	SMALLER CAP WORLD FUND INC	BUY	400000	1068
MCX	BARCA GLOBAL MASTER FUND LP	SELL	400000	1068

### SCRIP'S IN F&O BAN

(To resume for normal trading below 80% of market wide limit required)

NIL



NIFTY 50 STOCKS: SUPPORT & RESISTANCE						
Symbol	Close	Support 1	Support 2	Pivot Point	Resistance1	Resistance2
ACC	1388.75	1376.67	1364.58	1393.33	1405.42	1422.08
ADANIPORTS	284.10	280.42	276.73	286.68	290.37	296.63
AMBUJACEM	208.15	206.73	205.32	208.22	209.63	211.12
ASIANPAINT	805.85	798.17	790.48	804.83	812.52	819.18
AXISBANK	463.80	459.87	455.93	465.93	469.87	475.93
BAJAJ-AUTO	2414.30	2390.32	2366.33	2429.28	2453.27	2492.23
BANKBARODA	159.40	157.47	155.53	160.43	162.37	165.33
BHARTIARTL	336.55	331.77	326.98	338.88	343.67	350.78
BHEL	194.40	190.83	187.27	196.17	199.73	205.07
BOSCHLTD	19892.60	19709.63	19526.67	20023.47	20206.43	20520.27
BPCL	889.00	881.85	874.70	888.35	895.50	902.00
CAIRN	150.35	148.55	146.75	151.40	153.20	156.05
CIPLA	658.05	650.37	642.68	662.88	670.57	683.08
COALINDIA	337.10	330.48	323.87	334.97	341.58	346.07
DRREDDY	4249.40	4214.93	4180.47	4271.57	4306.03	4362.67
GAIL	294.80	290.43	286.07	297.47	301.83	308.87
GRASIM	3696.85	3671.03	3645.22	3688.52	3714.33	3731.82
HCLTECH	877.50	873.10	868.70	878.45	882.85	888.20
HDFC	1205.85	1196.00	1186.15	1210.40	1220.25	1234.65
HDFCBANK	1079.85	1071.90	1063.95	1077.45	1085.40	1090.95
HEROMOTOCO	2638.70	2610.33	2581.97	2634.47	2662.83	2686.97
HINDALCO	81.05	80.43	79.82	81.42	82.03	83.02
HINDUNILVR	802.65	796.40	790.15	804.00	810.25	817.85
ICICIBANK	270.05	268.03	266.02	270.77	272.78	275.52
IDEA	139.10	137.77	136.43	139.33	140.67	142.23
INDUSINDBK	907.45	901.53	895.62	907.17	913.08	918.72
INFY	1122.90	1113.20	1103.50	1129.10	1138.80	1154.70
ITC	337.15	333.87	330.58	336.53	339.82	342.48
KOTAKBANK	650.60	641.70	632.80	656.80	665.70	680.80
LT	1368.95	1362.12	1355.28	1370.83	1377.67	1386.38
LUPIN	1838.25	1829.03	1819.82	1842.72	1851.93	1865.62
M&M	1259.75	1246.98	1234.22	1258.37	1271.13	1282.52
MARUTI	4526.60	4497.00	4467.40	4526.00	4555.60	4584.60
NTPC	136.00	134.77	133.53	135.88	137.12	138.23
ONGC	250.65	248.93	247.22	251.37	253.08	255.52
PNB	129.60	128.60	127.60	130.20	131.20	132.80
POWERGRID	130.95	130.07	129.18	131.28	132.17	133.38
RELIANCE	936.60	929.40	922.20	940.20	947.40	958.20
SBIN	233.90	231.67	229.43	235.33	237.57	241.23
SUNPHARMA	815.95	800.00	784.05	824.95	840.90	865.85
TATAMOTORS	404.00	399.37	394.73	406.08	410.72	417.43
TATAPOWER	68.50	67.93	67.37	68.72	69.28	70.07
TATASTEEL	225.40	221.13	216.87	228.57	232.83	240.27
TCS	2482.65	2463.45	2444.25	2499.20	2518.40	2554.15
TECHM	534.95	529.62	524.28	538.28	543.62	552.28
ULTRACEMCO	2834.90	2805.43	2775.97	2855.57	2885.03	2935.17
VEDL	94.05	92.20	90.35	95.50	97.35	100.65
WIPRO	570.85	568.50	566.15	571.70	574.05	577.25
YESBANK	762.00	753.90	745.80	767.20	775.30	788.60
ZEEL	406.05	401.75	397.45	408.35	412.65	419.25



## CORPORATE ACTION / BOARD MEETINGS

NSE Download Ref.No.:NSE/CML/31048:-Face Value Split - Shilpa Medicare Limited from Rs. 2 to Rs.1 wef November 6, 2015

NSE Download Ref.No.: NSE/CML/31065:- Listing of Equity Shares of IDFC Bank Limited pursuant to Scheme of Arrangement wef November 06, 2015

NSE Download Ref.No.:NSE/CML/31078:- Change in Name of the Company from Gulf Oil Corporation Limited to GOCL Corporation Limited. Symbol will change from GULFCORP to GOCLCORP wef November 10, 2015

### BOARD MEETINGS

COMPANY NAME	DATE	PURPOSE	RS. PER SH.
HARITASEAT	6-Nov-15	Dividend	2.5
NAVINFLUOR	6-Nov-15	Dividend	10
AEGISCHEM	6-Nov-15	Dividend	0.3
SHRIRAMCIT	6-Nov-15	Dividend	5
SHILPAMED	6-Nov-15	Face Value Split From Rs 2 To Re 1	
MARICO	9-Nov-15	Dividend	1.75
AARTIIND	9-Nov-15	Dividend	
MAYURUNIQ	9-Nov-15	Dividend	0.8
SOLARINDS	9-Nov-15	Dividend	9
GRANULES	9-Nov-15	Dividend	0.15
ASTRAL	9-Nov-15	Dividend	
GULPOLY	10-Nov-15	Dividend	1.75
ATULAUTO	10-Nov-15	Dividend	2.75
AARTIDRUGS	10-Nov-15	Dividend	
TIDEWATER	10-Nov-15	Dividend	150
LGBBROSLTD	10-Nov-15	Dividend	2.5
MANAKSIA	10-Nov-15	Dividend	
ONGC	10-Nov-15	Dividend	
MRF	10-Nov-15	Dividend	3
DCMSHRIRAM	13-Nov-15	Dividend	1.2
SUNDRMFAST	13-Nov-15	Dividend	0.85
GABRIEL	16-Nov-15	Dividend	0.45

## NEWS & RUMOURS:

- Gold (Spot Dollar) major support = \$1080/\$1048 & Resistance = \$1132/\$1168.
- Crude oil range->\$41 to \$51.
- EU Cuts Growth and Inflation Outlook as ECB Decision looms: - The European Commission cut its euro-area growth and inflation outlook for next year, citing more challenging global conditions and fading impetus from lower oil prices and a weaker euro. Gross domestic product in the 19-nation bloc is set to grow 1.8 percent in 2016, down from a previous projection of 1.9 percent in May, the Commission said in its autumn forecast published Thursday. Inflation is seen accelerating to 1.6 percent in 2017 from 0.1 percent this year.
- Dollar Climbs on Fed Bets as China Stocks Return to Bull Market: - The dollar climbed toward an almost eight-month high after Federal Reserve Chair Janet Yellen signaled a possible interest rates increase next month, sending global bonds lower. The Shanghai Composite Index entered a [bull market](#) as government support underpinned the rebound from China's \$5 trillion stock rout.
- Iron Ore Chief Says Rio Can't Turn Off Tap to Boost Prices: - Rio Tinto Group, the world's second-largest iron ore producer, said it will keep defending market share and insisted it's wrong to believe cuts to output would lift waning prices, which are headed for a third annual decline.
- China Unicom Jumps as Government Signals Deeper Industry Reform: - China United Network Communications Ltd. raised the most in more than months in Shanghai trading after a government official signaled further reorganization is in store for the nation's state-run telecommunications industry.

## TRENDS & OUTLOOK – DATE: 06- Nov- 2015

### PRECIOUS METALS:

COMMDITY (MCX)	S2	S1	PIVOT POINT	R1	R2
GOLD (Dec)	25360	25610	25850	26260	26596
SILVER (Dec)	33300	34500	35400	36786	38100

### BASE METALS

COMMDITY (MCX)	S2	S1	PIVOT POINT	R1	R2
COPPER (Nov)	320	325	333	339	345
ZINC (Nov)	104.40	106.45	108.70	111.40	113.20
LEAD (Nov)	104.70	107.10	109.60	112.30	114.90
NICKEL (Nov)	612	630	645	666	684

### ENERGY

COMMDITY (MCX)	S2	S1	PIVOT POINT	R1	R2
CRUDE OIL (Nov)	2850	2930	3050	3175	3245
NATURAL GAS (Nov)	142	148	153	160	165

### DATE TALKS : TODAY'S ECONOMIC DATA :

FOMC Member Lockhart Speaks, RBA Monetary Policy Statement, Average Hourly Earnings, Non-Farm Employment Change, Unemployment Rate, and NIESR GDP Estimate.





Registered Office

Indira House, 3rd Floor, 5 Topiwala Lane,  
Opp. Lemington Road Police Station, Grant Road (East), Mumbai - 400007.

Corporate Office

'Ramavat House' E-15, Saket Nagar, Indore - 452018 (M.P.)

Customer Care

Tel: +91-731-4097170/ 71/ 72/ 73/ 74 M. +91 93031 72345

Email: [customercare@indiratrade.com](mailto:customercare@indiratrade.com) [www.indiratrade.com](http://www.indiratrade.com)



INSTITUTIONAL DEALING UNIT

Africa House, 5, Topiwalla Lane, Lamington Road, Mumbai, 400007

Tel: +91 22 30080678 Fax : +91 22 23870767 Email : [ie@indiratrade.com](mailto:ie@indiratrade.com)

**Disclaimer**

This report is for private circulation within the Indira Group. This report is strictly confidential and for information of the selected recipient only and may not be altered in any way, transmitted to, copied or distributed, in part or in whole, to any other person or to the media or reproduced in any form. This report should not be construed as an offer or solicitation to buy or sell any securities or any interest in securities. It does not constitute a personal recommendation or take into account the particular investment objectives, financial situations, or any such factor. The information, opinions estimates and forecasts contained here have been obtained from, or are based upon, sources we believe to be reliable, but no representation of warranty, express or implied, is made by us to their accuracy or completeness. Opinions expressed are our current opinions as of the date appearing on this material only and are subject to change without notice.